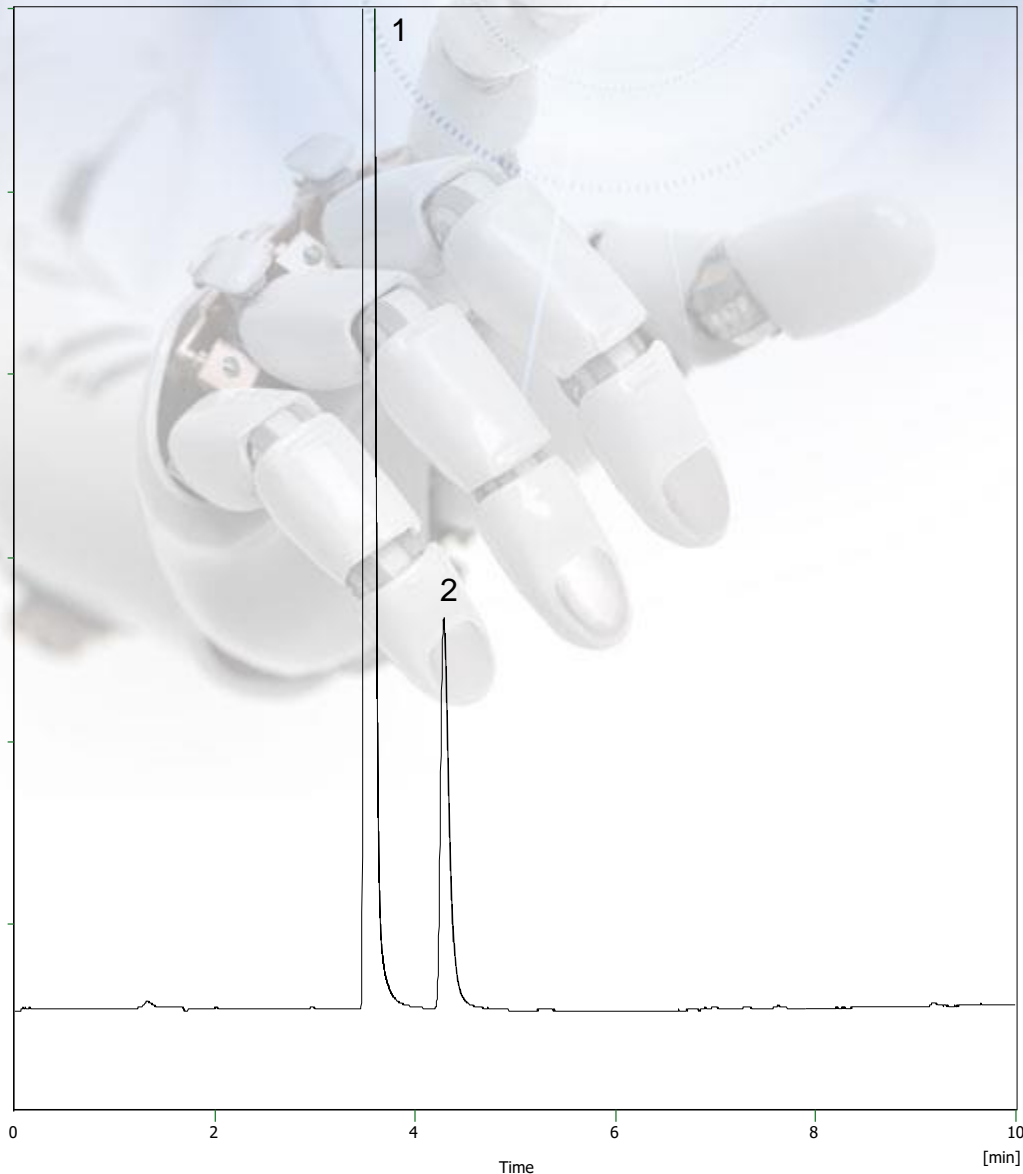


Solpadol



- Column : **Evosphere AQUA 150x4.6 3um**
- p/n : **EVOAQ-050703**
- Mobile Phase:
 - A- Water + 0.1% Formic acid**
 - B- ACN + 0.1% Formic acid**
 - 10-50% B in 10 mins, 5 min hold**
- Flow : **1.0 ml/min**
- Temp : **AMB**
- λ : **254nm**
- 1. **Acetaminophen**
- 2. **Co-codamol**

